



prochaska
& associates

planning
architecture
engineering
interiors
facility
management



WEBSTER COUNTY JUSTICE CENTER

Phase 2 – Citizen Jail Committee
Kickoff Meeting – Mtg. #1
1/24/2018



EXPECTATIONS OF CITIZENS JAIL COMMITTEE

■ COMMITTEE MEMBER EXPECTATIONS

- ✓ Will you *commit* to attending *all* the meetings?
- ✓ Will you *commit to continuing* on the *Campaign Committee*, should the Board proceed with a Referendum?
- ✓ Will you bring an *open mind* to this issue and formulate an opinion based on Webster County's needs and the facts presented?
- ✓ Will you agree to endeavor to work with the Committee towards a *unanimous recommendation* to the Board of Commissioners?
- ✓ Will you agree to *convey your opinion*, with the associated facts, to your fellow citizens to support the recommendation made to the Board of Commissioners in support of a potential Bond Election?





PHASE 1 NEEDS ASSESSMENT

■ PURPOSE OF PHASE 1 NEEDS ASSESSMENT

- To evaluate the functional and operational deficiencies of existing Law Enforcement facility
- To forecast the estimated number of beds needed to serve Webster County's projected jail populations for 20-30 years
 - To provide an inmate forecast based upon a 'County Only' approach
 - To provide an inmate forecast based upon a 'More Regional' approach
- To provide an initial range of budget estimates for a New Justice Center (Sheriff's Office, County Jail, and Courtroom facility) based upon the 20-30 year inmate forecast and needs of the county judicial system





PHASE 2 PRELIMINARY CONCEPT PLANNING



BEYOND THE MYTHS

The Jail in Your Community

presented by
The National Institute of Corrections

23 minutes





CURRENT LAW ENFORCEMENT FACILITY EVALUATION



- NO ADA COMPLIANT RAMPS
- NON-COMPLIANT HANDRAILS
- INTERIOR STAIR HAS NO DIRECT EXIT TO EXTERIOR



CURRENT LAW ENFORCEMENT CENTER FACILITY ISSUES

- FENCED SPACE HOUSES
HVAC, TRASH CONTAINERS,
RANDOM STORED ITEMS



CURRENT LAW CENTER FACILITY ISSUES



- DELIVERY & STAFF ENTRANCE IS A PRIMARY SECURITY CONCERN FOR STAFF
- LOW ROOF AND WEAK FENCING WITH ACCESSIBLE CELL WINDOWS ABOVE
- MOST LIKELY ENTRY POINT FOR INTRUSION
- NOT DIRECTLY MONITORED - ENTERS INTO STORAGE PANTRY
- FENCED SPACE CONTAINS HVAC EQUIPMENT, TRASH CANS, DELIVERY ITEMS AND IS AN INDICATION OF LACK OF STORAGE/DEDICATED SPACES
- DETERIORATION IS REPRESENTATIVE OF THE CONDITION OF THE ENTIRE FACILITY





- EXTERIOR STUCCO IS CRUMBLING, ALLOWING WATER TO ENTER THE STRUCTURE
- WATER IS ERODING THE FOUNDATION AND ROTTING THE WOOD STRUCTURE

- OVERALL THE EXTERIOR CONDITION OF THE SHERIFF'S OFFICE AND JAIL FACILITY ARE DETERIORATED
- MASONRY IS CRUMBLING
- WOOD STRUCTURE IS ROTTING



- FOUNDATION DETERIORATION CAUSING UNEVEN SETTLEMENT THROUGHOUT THE FACILITY.
- WATER INTRUSION HAS LED TO MOLD ISSUES THROUGHOUT THE FACILITY





- THE NEARBY RESIDENTIAL HOMES AND HIGH SCHOOL ARE VISUALLY AND VERBALLY EXPOSED TO INMATES IN EXERCISE SPACE
- THE PUBLIC ENTERING THE COURTHOUSE ARE EXPOSED TO INMATE EXERCISE
- A LIKELY SOURCE OF INMATES ACQUIRING CONTRABAND
- CHAIN-LINK FENCING ITSELF IS A COMMON SOURCE OF MATERIAL TO MAKE WEAPONS
- EXERCISE SPACE IS EXPOSED TO INCLEMENT WEATHER



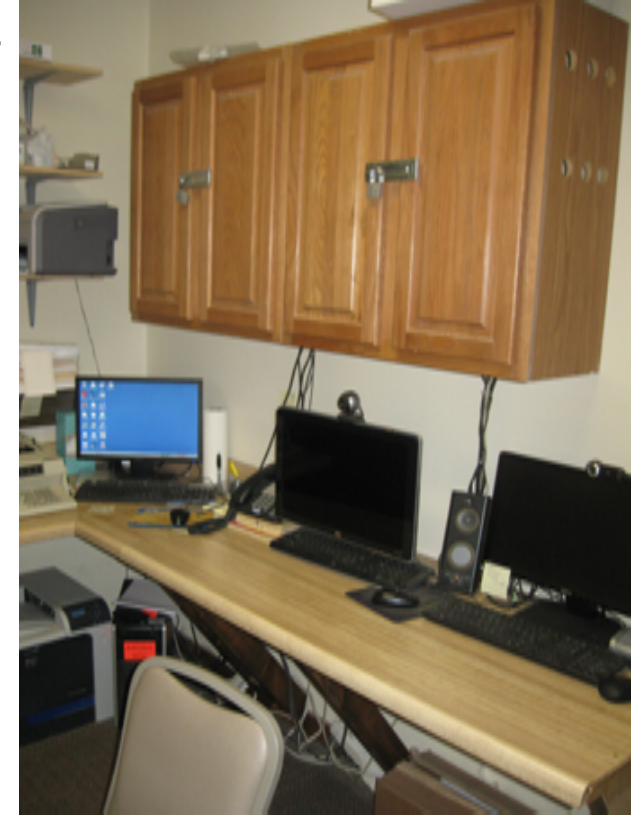


- ENTRY VESTIBULE IS GREATLY UNDERSIZED AND LACKS SECURITY. SPACE DOUBLES AS WAITING ROOM AND STORAGE.
- NO SECURITY GLASS BETWEEN PUBLIC AND DISPATCH WITH DIRECT VISIBILITY INTO CELL ENTRY DOORS, DISPATCH, & JAIL SUPPORT SPACES. INMATES CAN BE DIRECTLY VISIBLE TO VISITORS.





- LACK OF SPACE AND MULTIPLE-USE OF SPACE LEADS TO POTENTIAL SAFETY ISSUES
- ITEMS AVAILABLE FOR INMATES TO BRING CONTRABAND INTO JAIL
- ITEMS AVAILABLE TO INMATES TO ASSAULT STAFF AND OTHER INMATES



- SHERIFF'S OFFICE AND JAIL LACKS SPACE
- INTERVIEW ROOM DOUBLES AS A CONFERENCE ROOM, INMATE VISITATION, INMATE CHANGE-OUT, BOOKING, STORAGE, WORKSTATION, AND SECURED STORAGE.



- PROXIMITY OF INTERVIEW/ INTERROGATION ROOM TO LOUDER SPACES (STAIRS, ENTRY, OFFICE, DISPATCH, ETC.) CAN DISRUPT INTERVIEWS OF SUSPECTS AND RECORDING EQUIPMENT USED FOR COURT





- DISPATCH/MASTER CONTROL SHOULD BE LOCATED WITHIN A MORE SECURED AREA OF THE JAIL, INSULATED FROM VISITORS, PUBLIC, AND INMATES
- EXPOSED ELECTRICAL PANEL WIRING

- DISPATCH LACKS NEEDED SECURITY AND SEPARATION FROM VISITORS ENTERING THE SHERIFF'S OFFICE
- DISPATCH IS THE CENTRAL HUB TO THE FACILITY AND ACCESS TO THE JAIL CELLS, KITCHEN, BASEMENT, LIBRARY/OFFICE STORAGE.
- INMATES ARE ESCORTED THROUGH DISPATCH TO GO TO EXERCISE, THE LIBRARY, AND MEETING ROOM





- KITCHEN & LAUNDRY UTILIZE RESIDENTIAL APPLIANCES THAT ARE LIKELY NEAR CAPACITY FOR 8-10 INMATES
- RESIDENTIAL APPLIANCES WILL LIKELY TO REQUIRE GREATER RATE OF REPLACEMENT THAN EXPERIENCED IN A RESIDENCE, ESPECIALLY AS JAIL INMATE POPULATION INCREASE



- KITCHEN & LAUNDRY SHARE A COMMON SPACE DIRECTLY CONNECTED TO DISPATCH.
- DESPITE RECENT REMODEL, KITCHEN IS ONLY SIZED FOR 8 TO 10 INMATES

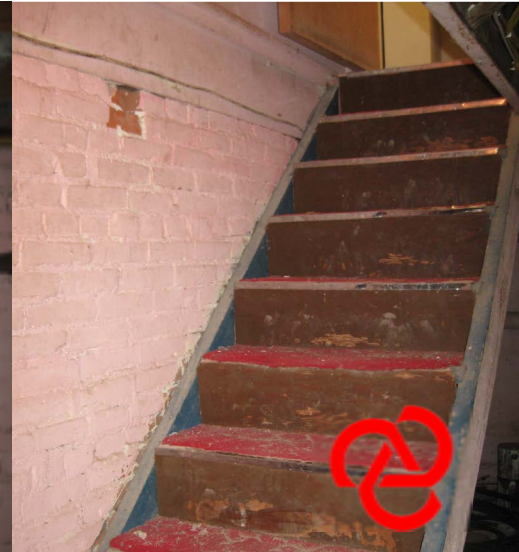


- KITCHEN/LAUNDRY ARE CONNECTED TO A STORAGE PANTRY WITH A DELIVERY ACCESS
- DELIVERY ACCESS IS A SIGNIFICANT CONCERN FOR STAFF FOR BREAK-INS AND STAFF ASSAULT





- BASEMENT AREA FOUNDATION IS CRUMBLING
- WOOD STRUCTURE IS ROTTING
- STAIRS DON'T MEET CODE, TOO STEEP TO CARRY ITEMS SAFELY DOWNSTAIRS.
- SIGNIFICANT WATER INTRUSION ISSUES & MOLD
- TOO WET TO SAFELY STORE EVIDENCE OR RECORDS



CURRENT LAW CENTER FACILITY ISSUES





- DUE TO LACK OF SPACE, THE JAIL LIBRARY DOUBLES AS OFFICE STORAGE, INMATE VISITATION, COMMISSARY, JAIL SUPPLY STORAGE, WALKWAY TO EXERCISE, AND PRINTING.
- DIRECT ACCESS TO DISPATCHING.





- THE COUNTY SHERIFF (ALSO COUNTY JAIL ADMINISTRATOR) AND CHIEF DEPUTY (ALSO COUNTY EMERGENCY MANAGER) SHARE AN OFFICE WITH FOUNDATION/FLOORING SETTLEMENT ISSUES (SEE BELOW)
- LACKS STORAGE AND NO MEETING SPACE



CURRENT LAW CENTER FACILITY ISSUES



- SIX SHERIFF'S DEPUTIES SHARE FOUR DESKS IN WHAT WAS ONCE THE LARGEST BEDROOM OF THE SHERIFF'S RESIDENCE
- STAIR TO OFFICE DOES NOT MEET CODE, DANGEROUS, LOUD & NEXT TO INTERVIEW ROOM
- NO SPACE FOR K-9 KENNEL



CURRENT LAW CENTER FACILITY ISSUES



- RESTROOMS – LACK OF PUBLIC & STAFF RESTROOMS.
- NO RESTROOMS FOR VISITORS
- DESIGNED PRIOR TO WIDE-SPREAD USE OF COMPUTERS, THE FACILITY LACKS A SECURED SERVER CLOSET (SERVER IS LOCATED IN THE RESTROOM)

- ORIGINAL SHERIFF'S OFFICE AND JAIL WAS NOT ONLY DESIGNED TO HOUSE THE OFFICE OF THE SHERIFF AND INMATES, BUT ALSO HOUSED THE SHERIFF'S FAMILY.
- THESE RESIDENTIAL SPACES ARE NO LONGER NEEDED AND ARE HIGHLY INEFFICIENT





- CURRENT AND LONG-TERM STORAGE IS GREATLY INSUFFICIENT
- FILES ARE STORED IN THE PRESENCE OF MOLD WHICH DETERIORATES THE FILES AND IS A HEALTH RISK TO STAFF



- THE DISPATCH TOWER AND EMERGENCY BACKUP ARE STORED IN A FORMER BEDROOM
- DISPATCH EQUIPMENT IS STORED NEXT TO AN UNSEALED WINDOW WITH NO AUTOMATIC COOLING

- LACK OF FILE STORAGE SPACE CONTRIBUTES TO INABILITY TO NEATLY STORE FILES
- MANY FILES REQUIRE 'LIFE TIME' STORAGE STATUS-PREVENTING DISPOSAL





- NOT ADA ACCESSIBLE
- STAFF MUST CARRY SICK, INTOXICATED, OR DISABLED INMATES FROM THE 2ND LEVEL NIGHT CELLS
- STAFF HAVE FALLEN DOWN THE STAIRCASE
- PUBLIC VISIBLE TO INMATES THROUGH DISPATCH



- CELL LACKS SIGHT/SOUND SEPARATION WHEN FEMALES INMATES ARE HELD
- DAYROOMS HAVE ACCESS TO SHOWER
- EXPOSED ELECTRICAL CONDUIT, HVAC



- THE EAST DAYROOM CELL HOUSES 4 INMATES. INMATES IN THIS CELL MUST CLIMB STAIRS TO REACH EITHER OF THE DOUBLE BUNK NIGHT CELLS
- LOWER NIGHT CELLS ARE NOW STORAGE AND SHOWER



- ALL INMATES (MALE OR FEMALE) MUST ACCESS WEST CELL TO USE THE ONLY INMATE SHOWER
- MALE INMATES MUST VACATE THE WEST CELL FOR FEMALE INMATES TO SHOWER (SIGHT/SOUND SEPARATION NOT MAINTAINED)



- WEST DAYROOM CELL HOLDS 6 INMATES IN A NIGHT CELL LOCATED IN THE CENTER OF THE DAYROOM
- NIGHT CELL CONTAIN 3 BEDS EACH
- 6 INMATES SHARE 1 TOILET



- TIGHT INMATE CONFINES DESIGNED PRIOR TO JAIL STANDARDS (PATENT DATE: 9/15/1874)
- EXPOSED HVAC TUBING AND ELECTRICAL CONDUIT ACCESSIBLE TO INMATES





- WATER IS PENETRATING THE SHOWER COATING CAUSING CORROSION TO THE STEEL CELL
- EXPOSED SHOWER PLUMBING IS ACCESSIBLE TO INMATES INCREASING RISK OF INMATES HARMING THEMSELVES OR STAFF



- THE ONLY INMATE SHOWER IS ONLY ACCESSIBLE FROM EACH DAYROOM
- SHOWER IS A CONVERTED CELL FROM THE EAST DAY CELL

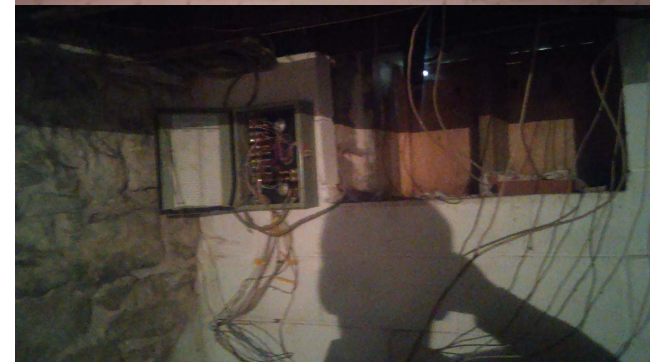


- SINGLE INMATE SHOWER REQUIRES STAFF TO SECURE AND ALTERNATE SHOWER DOORS BASED UPON INMATE CLASSIFICATION





- FACILITY RELIES ON RECENTLY INSTALLED MINI-SPLIT AND VARIABLE REFRIGERANT FLOW TYPE HVAC SYSTEMS
- OLD STEAM BOILER & RADIATORS NOT RELIABLE OR SAFE
- NO MECHANICAL VENTILATION AIR SYSTEMS



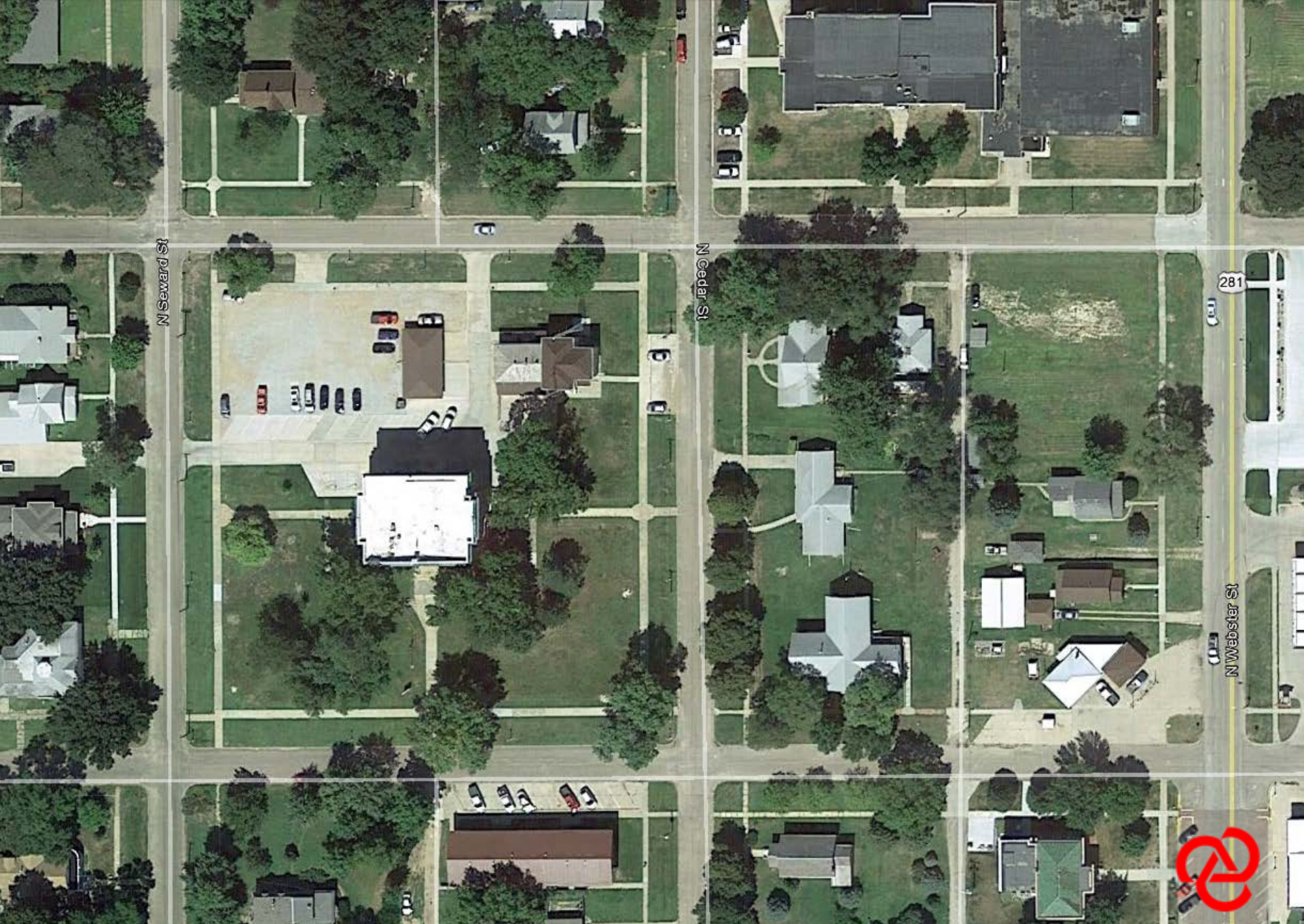
- DATED PLUMBING SYSTEM
- LIMITED SHUTOFF VALVES
- WATER SERVICE TOO SMALL
- GALVANIZED STEEL PIPE & OTHER LEAD COMPONENTS
- SIGNIFICANT CORROSION
- WATER HEATER TOO SMALL



- OVERTAXED ELECTRICAL SYSTEM
- GENERATOR TOO SMALL
- CODE VIOLATIONS - EMERG. POWER, ROMEX, ETC.



CURRENT LAW CENTER FACILITY ISSUES



N Seward St

N Cedar St

281

N Webster St



CURRENT LAW CENTER FACILITY ISSUES



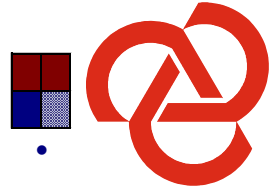
PROJECT SCHEDULE – NEXT STEPS

PROJECT SCHEDULE

owner: WEBSTER COUNTY
 project: JUSTICE CENTER
 project no.: 170509
 date: January 24, 2018
 team: Webster Co. / Citizens Jail Committee / Prochaska & Associates

K WC - Webster County
E CC - Citizens Jail Committee
Y PA - Prochaska & Associates

legend:
 programmed period for phase
 programmed period for task
 presentations/meetings



year	2018											
month	JAN	FEB	MAR	APL	MAY	JUN	JUL	AUG	SEP	OCT	NOV	
task	firm											
PHASE 2:												
PRELIM. CONCEPT PLANNING												
Recruit Citizens Jail Committee & Kick-Off Meeting, Jail Tour	WC/ CC/PA											
Phase 1 Review and Refine Program of Spaces	WC/ CC/PA											
Develop and Refine Project Options	WC/ CC/PA											
Develop Project Budget	WC/ CC/PA											
Recommendation of Top-ranked Option Concept	WC/ CC/PA											
Develop & Refine Top-ranked Option Concept	WC/ CC/PA											
Present Pre-Final Concept to Committee	WC/ CC/PA											
Preliminary Review w/ Nebraska Dept. of Corrections	WC/ CC/PA											
Final Recommendation by Committee	CC/PA											
Present Final Concept to Board of Supervisors	WC											
Go / No-Go Decision to Proceed with Project	WC											



Tour of WEBSTER COUNTY SHERIFF'S OFFICE & JAIL



THANK YOU!